

A person wearing a red and black plaid shirt and blue jeans is holding a white motorcycle helmet with both hands. The person is wearing a watch on their left wrist and several rings on their fingers. The background is dark and out of focus, showing parts of a motorcycle.

**BULLET**  
=====





---

KEEP IT  
OLD  
SCHOOL

---





**Double D ring**

## FEATURE

### Visor Lock System

Thermoforming polycarbonate with anti-scratch treatment and visor ratchet system with 5 buttons holders.

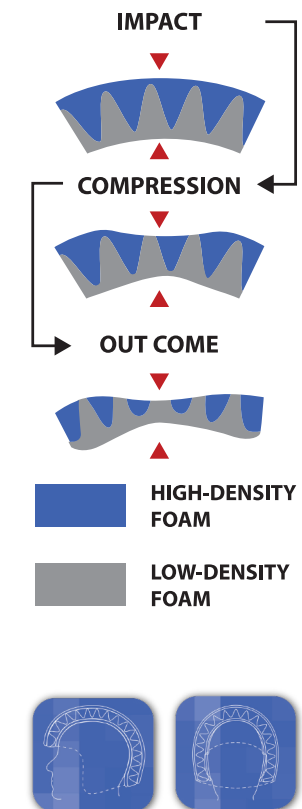
### Retention System

The Double D ring system is the most secure of all locking system.





**CONHEAD**



# FEATURE

## Shell

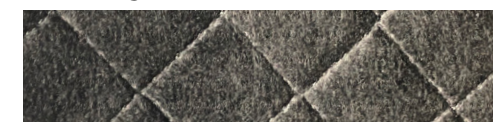
- Certified ECE R22.05, TIS 369-2557
- Made form CFRP ( Composite Fiber Reinforced Plastic )
- Weight 1000-1100±50 g
- 2 Shell Sizes, 3 Cusion Sizes ( S, M and L )

## Cushion Structure

The CONHEAD is a revolutionary new shock absorbing foam liner for safety helmets that incorporates cone-shaped structures within the thickness of the helmet liner.

## Interior Liner

Sythetic Suede with Diamond Stitching.





# FLASH WHITE

---



# GALAXY BLACK

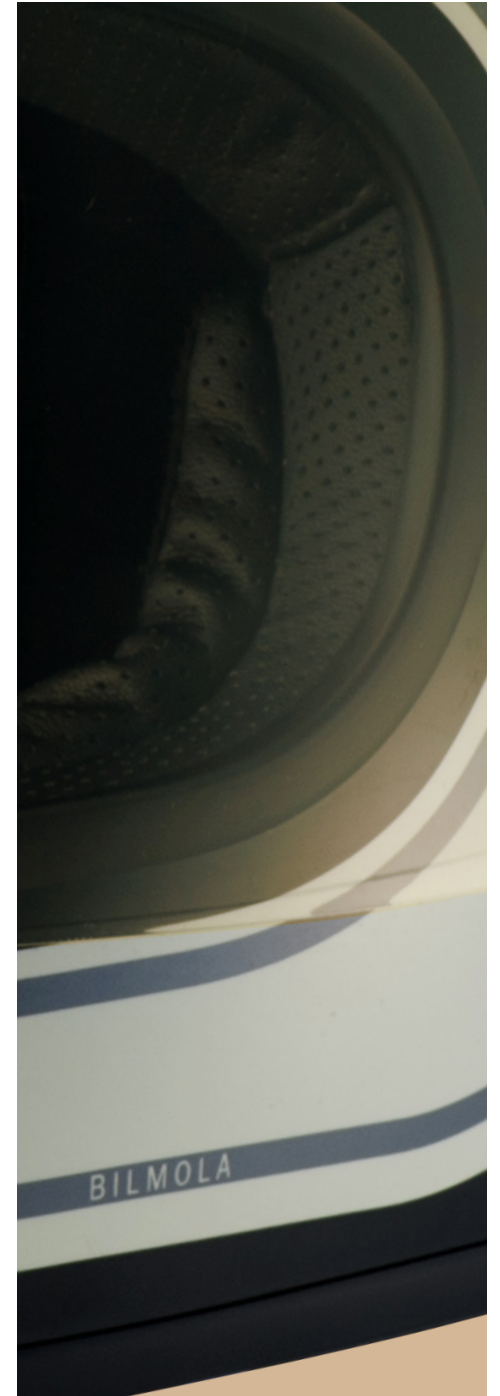
---





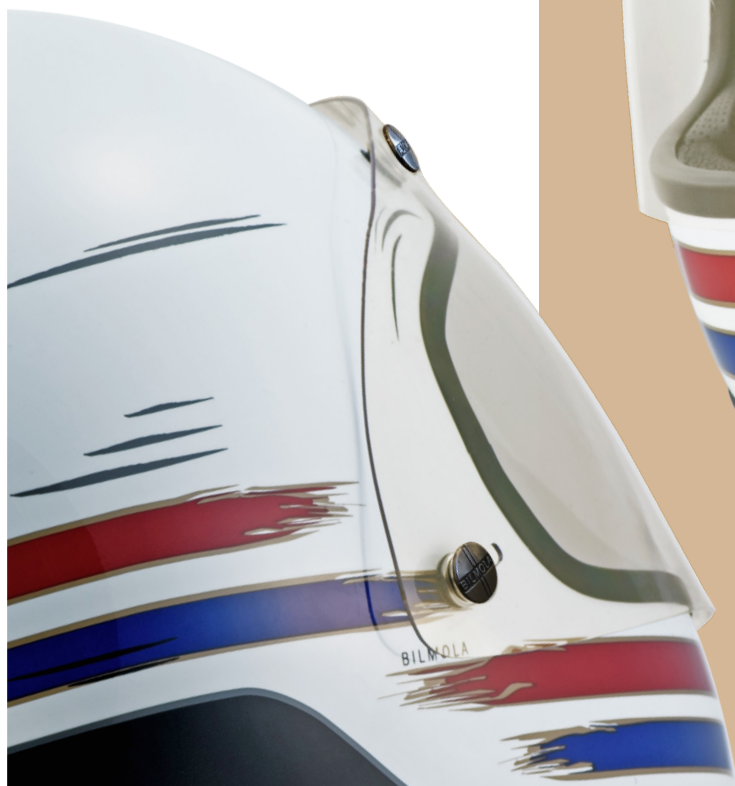
# ROYAL BLACK DATE

---



# ORIGIN WHITE RED BLUE

---







# Helmet Specification

SIZING	Number of Shell Sizes	2 Shell Sizes					
	Number of EPS Sizes	3 EPS Sizes : S, M and L					
	Interior Circumference (cm.)	53-54	55-56	57-88	59-60	61-62	63-64
	Sizes of Shell	M			L		
	Sizes of Cushion	S		M	L		
	Sizes of Interior Liners	XS	S	M	L	XL	XXL
MATERIALS	Shell Materials	Composite FRP					
	Cushion Materials	Expanded Polystyrene					
	Interior Liners	Synthetic Soft Suede with Diamond Stitching					
	Visor	Thermo Forming Polycarbonate and Anti Scratch Treatment					
SYSTEM	Type of Retension System	Double D Ring					
	Type of Cushion Structure	ConeHead Technology					
	Removable Interior	Available					
	Visor Ratchet System	5 Buttons Holder					
GENERAL	Weights	1000±50 g			1100±50 g		
	Standard Certificated	ECE R22.05 and TIS 369-2557					
	Visor Colors Avaialble	Tinted (STD)					





# BULLET

---

# IS OLD SCHOOL

---

**BILMOLA**

66/12-13 MOO5 SOI KEAW INN, PRACHAUTID KANCHANAPISEK Rd.,  
SAOTHONGHIN, BANGYAI, NONTABURI, 11140 THAILAND



bilmola\_Official



www.bilmola.com



(+66) 88 490 0232, (+66) 88 490 0233



www.facebook.com/bilmola



customercare@bilmola.com

